



Share your world - ERDAS TITAN 2008.

Share. Discover. Visualize. Access. Retrieve.

Now it's easy to share geospatial data and web services with users and communities internal and external to your organization, and consume data into a variety of client applications.

Share your world.

The ERDAS TITAN Network is a dynamic online solution for sharing geospatial data, web services and location-based content in a single, secure environment. The ERDAS TITAN Network allows users to share, discover, visualize, access and retrieve geospatial data into a variety of desktop, Internet and 3D virtual globe applications. This 3D environment supports users and organizations that want to make their geospatial data available while retaining digital ownership rights.

From the ground up.

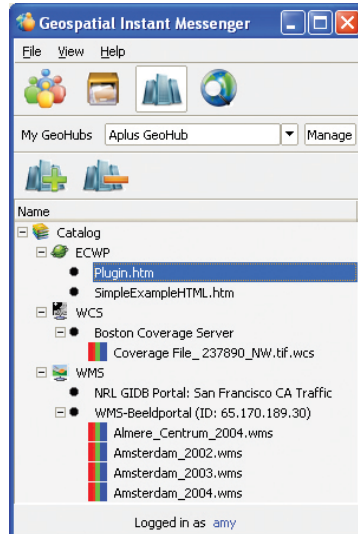
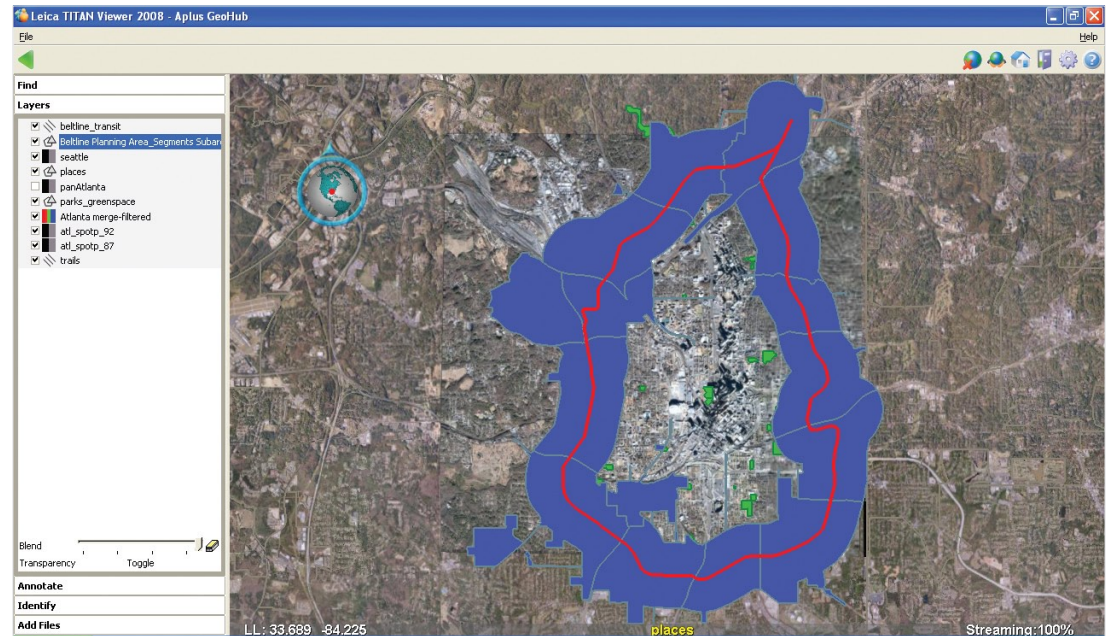
ERDAS TITAN goes well beyond the capabilities of static 2D websites to offer powerful features for connecting and communicating to a network of worldwide geospatial users, and discovering, visualizing and ultimately consuming geospatial data and web services.



Using the ERDAS TITAN Viewer, users create and share a MyWorld – a 3D geospatial profile – and subsequently allow other users to enter, navigate and explore with permission-based access.

The ERDAS TITAN Network

- Provides a single secure network for sharing and retrieving geospatial data, web services and location-based content
- Creates a geospatial data bridge to consume data in a variety of Internet, desktop and virtual globe applications
- Moves away from static 2D web sites to a 3D virtual globe with high performance
- Allows interactive communication within a network of users and communities
- Empowers a local geospatial author of content to become a server of content
- Enables consumption of geospatial data based on standard Open Geospatial Consortium (OGC) web services such as WMS and WCS



Consume public catalogs of web services in the GeoIM, including OGC compliant (WMS and WCS) and ECWP image streaming protocol.

Users create a MyWorld – a geographically enabled personal space – where they can upload their data, set permissions and share content with other network users. The Geospatial Instant Messenger application supports sharing and real-time communication among ERDAS TITAN Network participants, including government and commercial data providers, GIS data clearinghouses, city/county and state/federal agencies and other members. Participants can access data published to the ERDAS TITAN Network from any OGC WMS compliant application or into various 3D virtual globes. Users can search for data and select which data they would like to visualize and retrieve.

A ERDAS TITAN GeoHub enables an organization to create a secure community within the ERDAS TITAN Network. It allows permission-based data distribution to a network of subscribers within the ERDAS TITAN Network. Users subscribe to a GeoHub, and a GeoHub admin establishes data sharing permissions for each subscriber. A GeoHub ensures secure, permission-based data sharing both on the individual and group level.

Start sharing your world today. Join the ERDAS TITAN Network at www.erdas.com/titan.

Copyright © 2008 ERDAS, Inc. Unpublished – All rights reserved. Use, reproduction or disclosure is governed solely by the ERDAS, Inc. standard commercial license. Contractor/Manufacturer is ERDAS, Inc., 5051 Peachtree Corners Circle, Suite 100, Norcross, GA 30092-2500 USA.

There are two unique viewing modes for working within the Viewer. Full View is the default and provides a full screen view of the globe. Work View (shown above) moves tools from the button bar into a panel on the left side of the screen.

ERDAS TITAN Network Components

For Individuals

The ERDAS TITAN Client is free to download and includes:

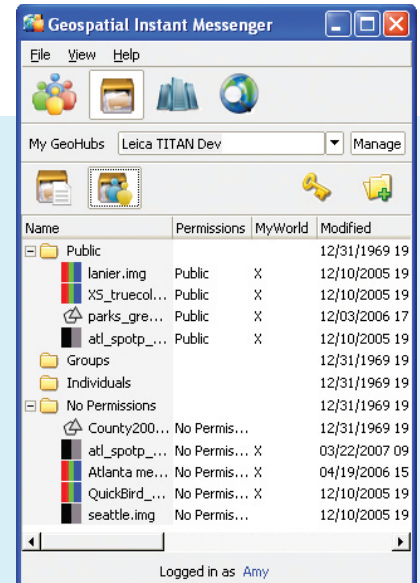
- **Geospatial Instant Messenger (GeoIM)**, an application implementing a communication protocol, enabling users and communities to publish and share geospatial data and web services for others to directly access and retrieve. The GeoIM also allows users within the ERDAS TITAN Network to chat, find, download and retrieve available geospatial data and web services.
- **ERDAS TITAN Viewer**, a free web-based application that enables a global network of users to interactively visualize and share geospatial data, web services and location-based content to others in a 3D MyWorld.

For Organizations

- **GeoHub™** allows organizations and data providers to create their own secure community within the ERDAS TITAN Network. This enables data to be shared and published internally, with the option of exposing geospatial data holdings to other users and communities within the ERDAS TITAN Network, as well.
- **ERDAS TITAN Web Cache Servers** may be added to improve the performance of the GeoHub. A GeoHub can support an unlimited number of web cache servers. The web cache servers may be located in different geographic locations than the GeoHub they serve.
- **ERDAS TITAN Master Server** enables implementation of a secure, isolated autonomous network. The Master Server acts as a registry service for all the GeoHubs and individual users, just as it does on the ERDAS TITAN Network. A Master Server manages the user profile and subscription information, handles GeoHub and individual registrations and takes login requests for an entire network.

Capabilities

- **Access, Discover, Visualize and Retrieve**
 - o 3D Models
 - o Feature datasets
 - o Imagery
 - o Location-based content
 - o Terrain
 - o Web Services
- **Change** feature and imagery dataset styles and symbology
- **Chat** with users
- **Consume** web services
 - o OGC compliant WMS and WCS
 - o Catalog services (CS-W) supporting data discovery
 - o ECWP image streaming protocol
- **Create and share**
 - o A customized MyWorld
 - o Information-rich photos and screenshots
 - o KML (points, lines, polygons, buildings)
- **Edit** metadata
- **Find** places by name, address, latitude/longitude
- **Identify** feature attributes
- **Load** data to a variety Internet, desktop and 3D virtual globe clients, including
 - o Google Earth
 - o Microsoft Virtual Earth
 - o WMS compliant applications
- **Manage** your Network
- **Navigate** a 3D scene
- **Publish** OGC compliant WMS
- **Register** with GeoHub communities on the ERDAS TITAN Network
 - o Participate via secure, permission-based access
 - o Privately interact with individuals and groups within that community
- **Search** the ERDAS TITAN Network for data and web services
- **Share** Geospatial data, web services and location-based content
- **Switch** to see other user's MyWorlds



(Above) View your local data shares under MyData in the GeoIM; choose to view either by file, or organized by Users, Groups and Permissions. (Left) In the TITAN Network tab, access local data and public catalogs shared by other users in the network.