

# RedSpider Enterprise

In a corporate environment, enterprise-wide access to geospatial information is strategic. Many applications need to access a common geospatial infrastructure for data integration, decision-making or other critical business applications.

RedSpider Enterprise offers the most extensive geospatial Java toolkit and component library on the market. It enables Enterprise Application Integration of powerful geospatial functionality with other business components within a robust enterprise architecture.

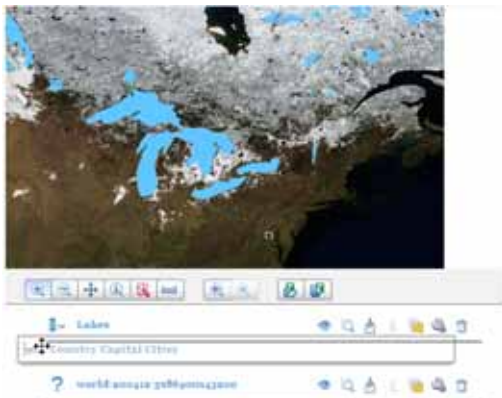
## Total and Comprehensive OGC Toolkit

Regardless of whether you choose to develop your enterprise business logic inside Web Services, JSP or EJBs, RedSpider Enterprise provides fine-grained access and control of a variety of geospatial objects to streamline effective enterprise level development.

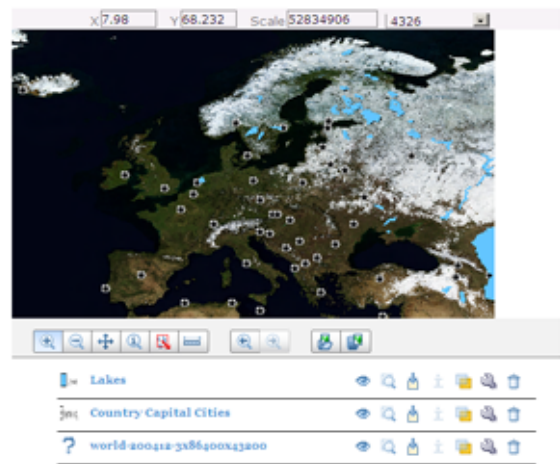
Access to OGC remote Web Services or to local data is completely transparent to the developer, allowing rapid redeployment without impact on the corporate landscape.

## Web Toolkit

The comprehensive web toolkit of RedSpider Enterprise offers a series of out-of-the-box components that perfectly integrate with the expert capabilities of the RedSpider platform, of which the proven maturity is your best guarantee. With the help of the web toolkit, build Rich Internet Applications and exploit the standards-based web services by creating maps, connecting to gazetteers, visualizing and editing spatial objects over the web or even from your own, unpublished data.



Reorder the layers of your maps by a simple drag and drop



Display layers from different services; here ECWP and WMS.

## Enterprise Application Integration (EAI)

RedSpider Enterprise provides a solid integration foundation that allows geospatial information from different architectures to work in collaboration. Relying on extensive OGC compliance, RedSpider Enterprise ensures a smooth integration with all the geographic information sources that your organization utilizes.

Implementing your solution with RedSpider Enterprise lowers risks and dramatically reduces the cost of ownership of large JavaEE applications.

## Flexible and Accessible for Successful Development

RedSpider Enterprise offers the flexibility to access local or remote data, using OGC standard protocols, and adapt them to create maps or customized and integrated decision-making applications at any tier of the enterprise landscape.



Discover the Power of Interoperability

# RedSpider Enterprise, the Enterprise OGC/ISO Geospatial Toolkit

## Introducing the Standards-based GEO API

Natively based on international geospatial standards, RedSpider Enterprise offers a complete Application Program Interface (API). This intelligent Geo API allows developers to build customized, interoperable and spatially enabled enterprise applications efficiently on a variety of platforms.

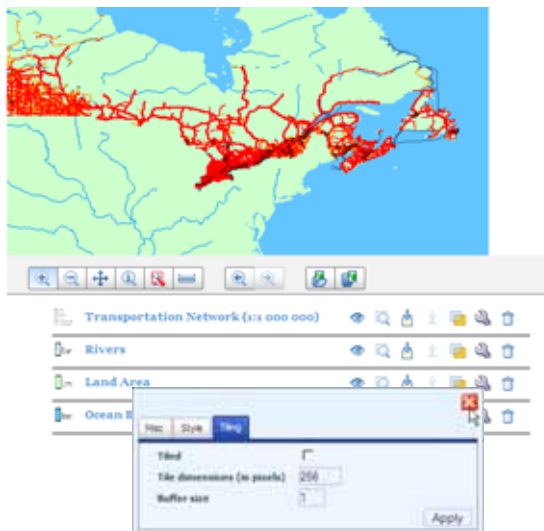
The API integrates an advanced and adaptive GML Schema Type manager. Developers can easily discover, parse and understand on-the-fly even the most complex GML 3 Schemas.

## RedSpider Enterprise Services

For your solution implemented with RedSpider Enterprise, receive expert support from IONIC's Service team. We can help your Java development team with product customizing and usage, ensuring an effective deployment in your organization.

IONIC's Services team also offers extensive product training and a variety of integration options to any level of developer. Upgrade your staff's skills and offer your organization all the benefits of the finest geospatial JavaEE flexibility on the market today.

## The RedSpider Suite



Easily manage Style and Tiling properties of each layer.

## Key Features (\*)

### Remote Data Access

- Access to OGC (Transactional) Web Feature Service (WFS, WFS-T)
- Access to OGC Web Map Service (WMS)
- Access to OGC Web Coverage Service (WCS)
- All capabilities support
- Automatic negotiation of version
- HTTP/SOAP

### Local Data Access

- Local database access: Oracle, ArcSDE, PostgreSQL/PostGIS
- Local access to Imagery: Tiff, geoTiff, PNG, BIL, Spot
- Shapefiles, local GML files, flat files
- Configurable mapping between database and feature type

### Java Components

- Microsoft Windows, Linux, SUN Solaris and MacOS
- SUN Java 1.5
- Application servers: Tomcat, Resin, JBoss and Oracle AS

### Web toolkit

- Supported browsers: Firefox 1.5+, Microsoft Internet Explorer 6+

(\*) For details on supported environments and their versions, please contact us.

Discover the Power of Interoperability