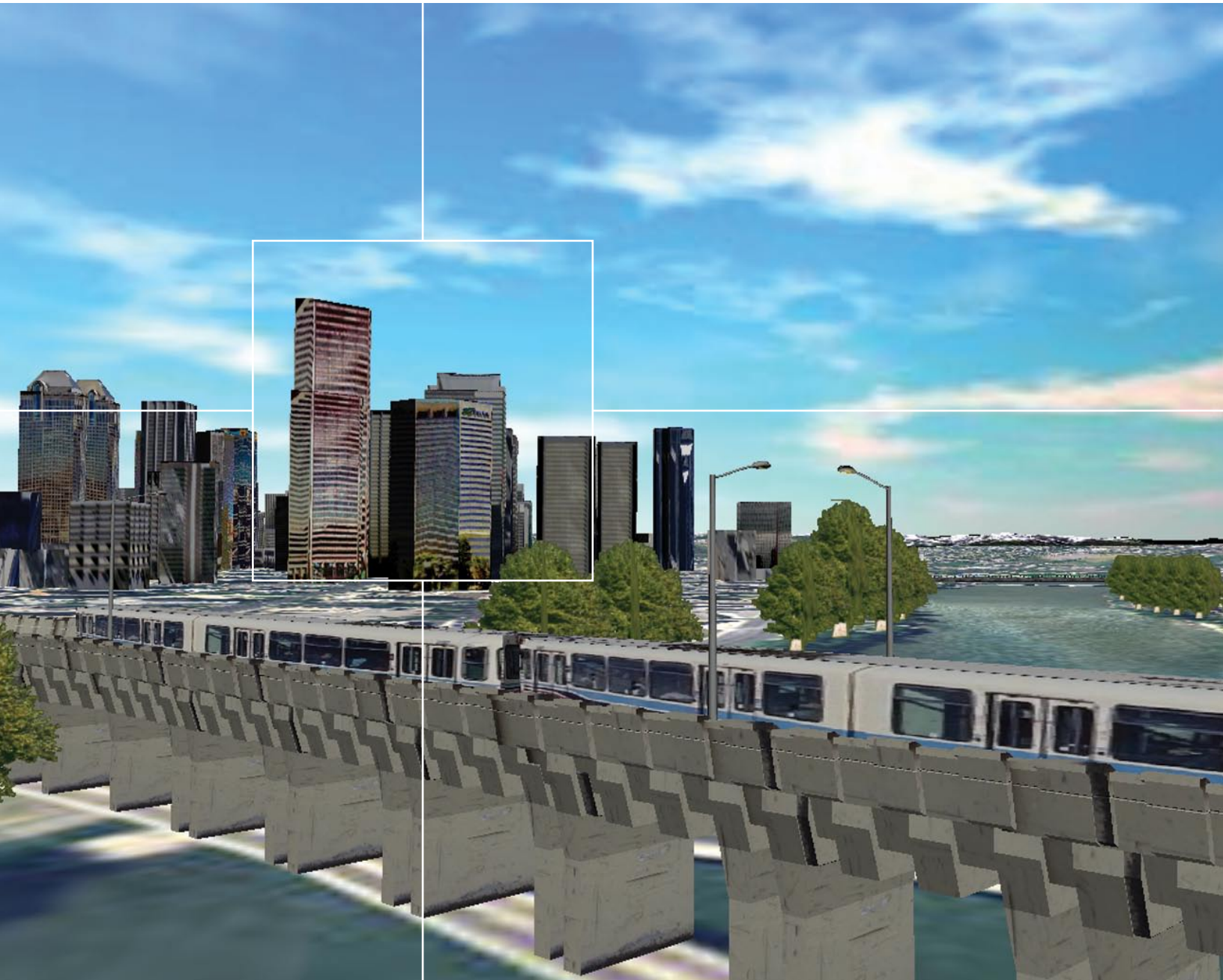


Leica Virtual Explorer™ Comprehensive 3D Visualization Suite



- when it has to be **right**

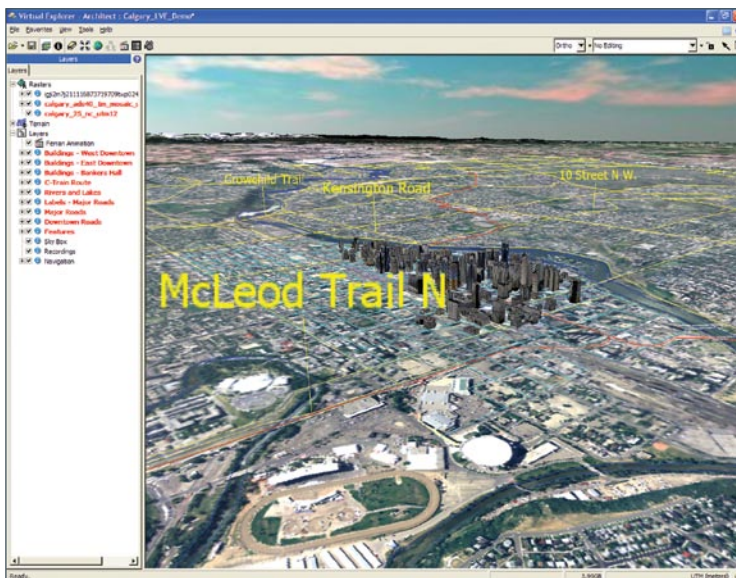
Leica
Geosystems

Leica Virtual Explorer™

Leica Virtual Explorer sets the standard in 3D visualization and exploration, converting the earth into a clear and spatially accurate digital reality. This intuitive tool suite allows terabytes of spatial information to be seamlessly merged into a highly informative digital earth and distributed to thousands of users worldwide without preprocessing. Using a planetary viewing environment, users everywhere can independently explore and analyze 3D terrain with a broad array of GIS and analysis tools over the internet. Alternatively, users can choose to collaborate in their exploration, sharing chat, views, scene markups and custom GIS layers with other users.

Key Features

- Presents realistic, geospatially accurate 3D scenes over the Internet without preprocessing
- One easy-to-use and intuitive interface
- Broad array of visualization and terrain analysis tools
- In-depth 3D animation features
- Comprehensive GIS analysis tools
- Supports a wide variety of geospatial information including complex and textured 3D models
- Displays movies, images and other supplementary information over the viewer
- Complete server administration
- Supports DVD and file based distribution
- Complete, highly informative collaboration support



Flexible Solution

Leica Virtual Explorer is a scalable solution that allows any level of data dissemination. From single desktop access and CD/DVD distribution to live Internet streaming to large numbers of clients simultaneously, the geospatial user can tailor the diffusion level of their scenes. Similarly, scene editing, customization, collaboration and analysis privileges are also adaptable. As a result, Leica Virtual Explorer is a suitable solution for business opportunities of all complexities that require a three-dimensional understanding of spatial data.



Benefits

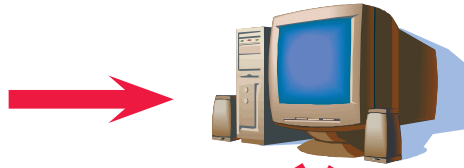
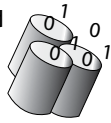
- Facilitates quick and educated decisions
- Prevents communication breakdown
- Elevates situational awareness and provides spatial context
- Gathers the perspective of all stakeholders of a mission or project
- Effectively communicates the status of a project throughout its duration
- Allows all aspects of a project to be taken into account and planned for
- Dramatically showcases any 3D landscape

capture ... reference ... measure ... analyze ... present

POWERING GEOSPATIAL IMAGING™

Leica Virtual Explorer Workflow

Mass amounts of geospatial data can be seamlessly merged into one, smoothly navigable 3D scene.



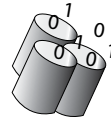
Leica Virtual Explorer Architect is an advanced 3D visualization program containing a comprehensive array of tools to construct and explore realistic 3D terrain interpretations. Once a project is created it can be saved and uploaded onto the Leica Virtual Explorer Server for web streaming or published for CD/DVD distribution using the Leica Virtual Explorer DVD add-on.

Leica Virtual Explorer DVD effortlessly converts rich 3D scenes into an efficient file-distributable format optimized for CD or DVD dispersal. Simply choose the raster, terrain and texture compression and the 3D scene is rendered to view with Leica Virtual Explorer Clients and Pro Clients.



Leica Virtual Explorer Server quickly and efficiently streams rich 3D terrain environments over private networks or the Internet to Leica Virtual Explorer Clients or Pro Clients worldwide. Server administration tools allow the full customization of client access and user privileges to each scene.

Leica Virtual Explorer Client is a freely distributable application allowing users to remotely explore and analyze 3D scenes with essential terrain analysis tools. GIS attribute information can be queried while collaboratively analyzing and chatting to other users with Leica Virtual Explorer Collaboration.



Leica Virtual Explorer Collaboration allows users worldwide to collaboratively explore, analyze and edit 3D scenes in a public or private collaboration session. Users are able to view and "attach to" the camera positions of others, chat to fellow session participants, collectively analyze and markup the 3D scene and share custom GIS layers all within a secure virtual meeting place.

Leica Virtual Explorer Pro Client allows remote users to analyze realistic 3D environments with a full analysis toolbox in addition to adding their own geospatial content on the scene. Site analysis markups and custom GIS data meshed into the 3D scene can be streamed to other users with Leica Virtual Explorer Collaboration.



- when it has to be **right**

Leica
Geosystems

About Leica Geosystems Geospatial Imaging Division

When building image-based maps, you need reliable measurements and solutions for your entire workflow. So when it has to be right, more geospatial professionals trust Leica Geosystems Geospatial Imaging, LLC to help them collect, analyze, and present spatial information. Leica Geosystems is powering geospatial imaging by putting precise imaging to work. Its broad array of photogrammetry and remote sensing software solutions capture data efficiently, reference imagery accurately, measure and analyze easily and present spatial information, even in 3D. Those who use Leica Geosystems Geospatial Imaging products every day trust them for their precision, their seamless integration, and their superior customer support. Delivering geospatial imaging solutions with precision, integration, and service from Leica Geosystems.

When it has to be right.

Copyright © 2005 Leica Geosystems Geospatial Imaging, LLC. Unpublished – All rights reserved. Use, reproduction or disclosure is governed solely by the Leica Geosystems Geospatial Imaging, LLC standard commercial license. Contractor/Manufacturer is Leica Geosystems Geospatial Imaging, LLC, 5051 Peachtree Corners Circle, Suite 100, Norcross, GA 30092-2500 USA.

Leica Geosystems Geospatial Imaging, LLC
5051 Peachtree Corners Circle, Suite 100
Norcross, GA 30092-2500 USA
Phone +1 770 776 3400

gi.leica-geosystems.com

- when it has to be **right**

Leica
Geosystems