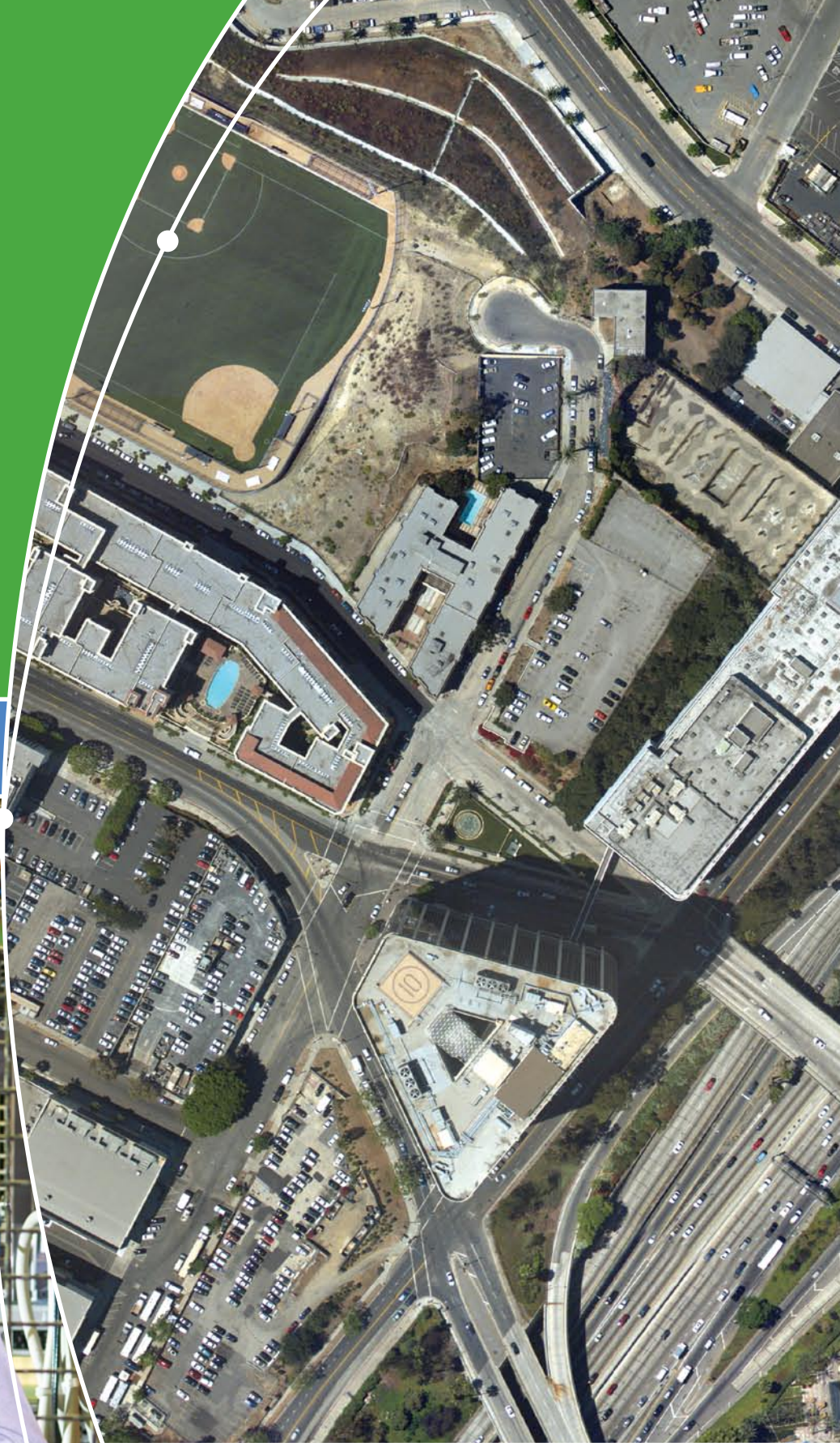


ERDAS Image Manager

Discover • Describe
Catalog • Serve



 **erdas**
The Earth to Business Company

Discover. Describe. Catalog. Serve.

ERDAS Image Manager is an Open Geospatial Consortium and International Organization for Standardization (OGC/ISO) compliant solution for efficiently storing and quickly sharing imagery throughout the enterprise. This dynamic solution comprehensively addresses problems universal to governments, businesses and other organizations that often work with geospatial data too large to be centrally stored, or rapidly shared.

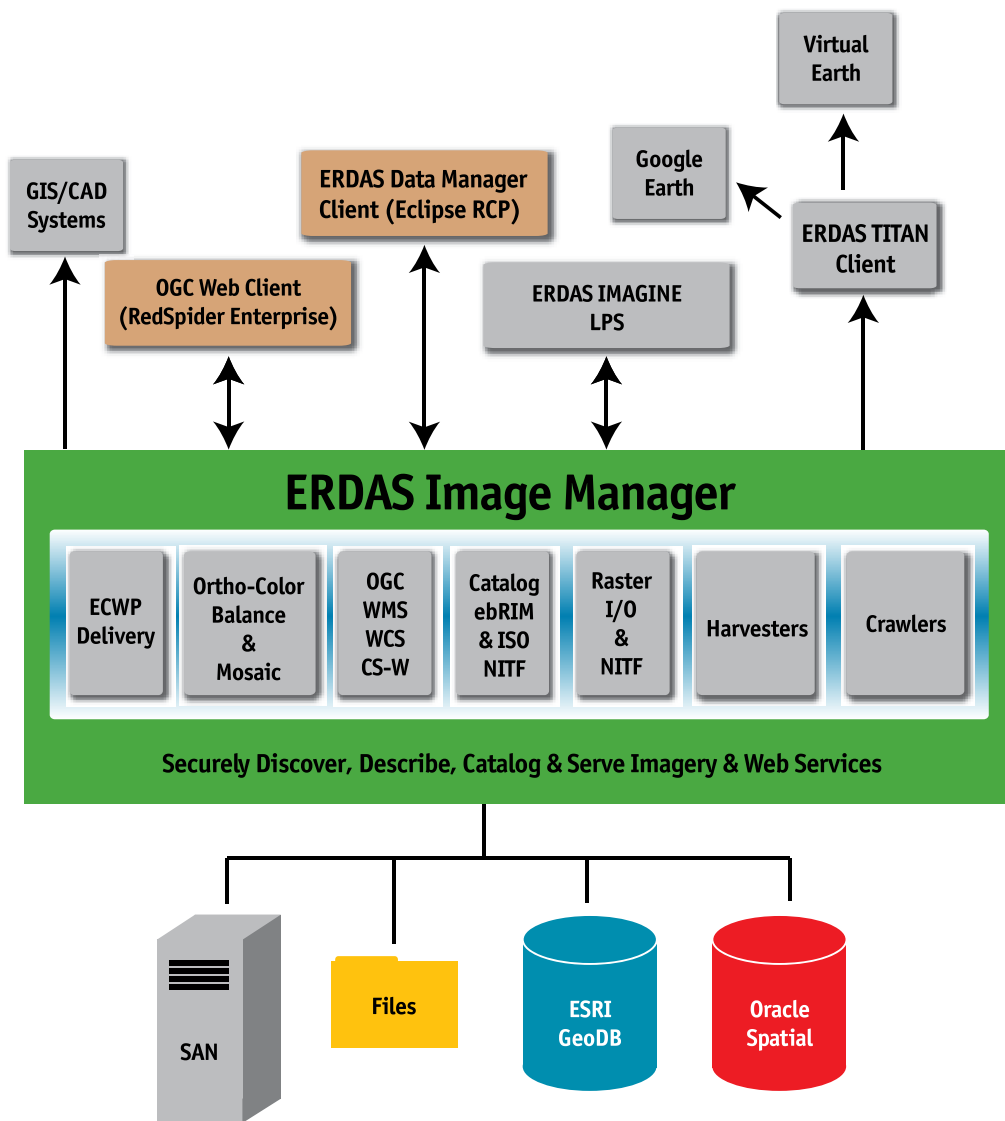
Understanding Your Needs

In today's fast changing business environment, you must produce and purchase large quantities of data to meet your organization's needs. However, this data is often too large to be centrally stored, or quickly shared. Many within an organization do not know what data exists or where it may be located. With this data, haphazard storing may result in duplicated efforts and redundant expenses cross-departmentally. With inadequate hardware and software, many companies struggle to serve and share their data both internally and externally. Each of these data management problems complicates and compromises the power of your investment.

Increasing the Power of Your Investment

Large data files include business critical geospatial information, whether you are a government agency, geospatial data provider, civil engineering organization, oil and gas company, large utilities organization or involved in land and natural resource management. Previously, geospatial technologies operated in the desktop environment, or via web applications detached from other vital IT and software business systems. Without interoperability, geospatial technologies were disconnected, with the data unable to be utilized to its full potential.

Data spread throughout an organization could not be adequately analyzed and fully transformed into the most comprehensive and understandable information. However, recent innovations and Service Oriented Architecture (SOA) developments have introduced interoperable, platform agnostic geospatial solutions. These technological advancements allow an organization to maximize the effectiveness of their existing business system. When your data includes imagery or terrain, implementing a solution that securely manages and rapidly delivers your geospatial information to users across an organization is critical to fully realizing the potential of your geospatial data investments. With such a solution, large quantities of existing data are not only readily accessible, but also made more functional, ultimately increasing your ROI. Saving time and money, a solution managing your imagery transforms your data to information, easing decision-making processes.



The Truly Interoperable Solution

Providing true interoperability, ERDAS Image Manager is a comprehensive, Open Geospatial Consortium and International Organization for Standardization (OGC/ISO) compliant solution solving business problems associated with securely discovering, describing, cataloging and serving imagery to a variety of web and rich client applications throughout an organization. ERDAS Image Manager seamlessly connects to numerous geoweb applications and geospatial solutions, including ERDAS IMAGINE®, ERDAS LPS, ERDAS TITAN and ArcGIS desktop products.

Implementing OGC standards (WMS, WCS and CS-W), ERDAS Image Manager provides rapid delivery of unprecedented volumes of imagery to domain specific desktop and consumer web client applications. Additionally, with ERDAS' RedSpider Enterprise and Image Integration Framework products, ERDAS Image Manager may be extended with tools to build geoweb applications that directly consume data and OGC web services from a variety of sources.



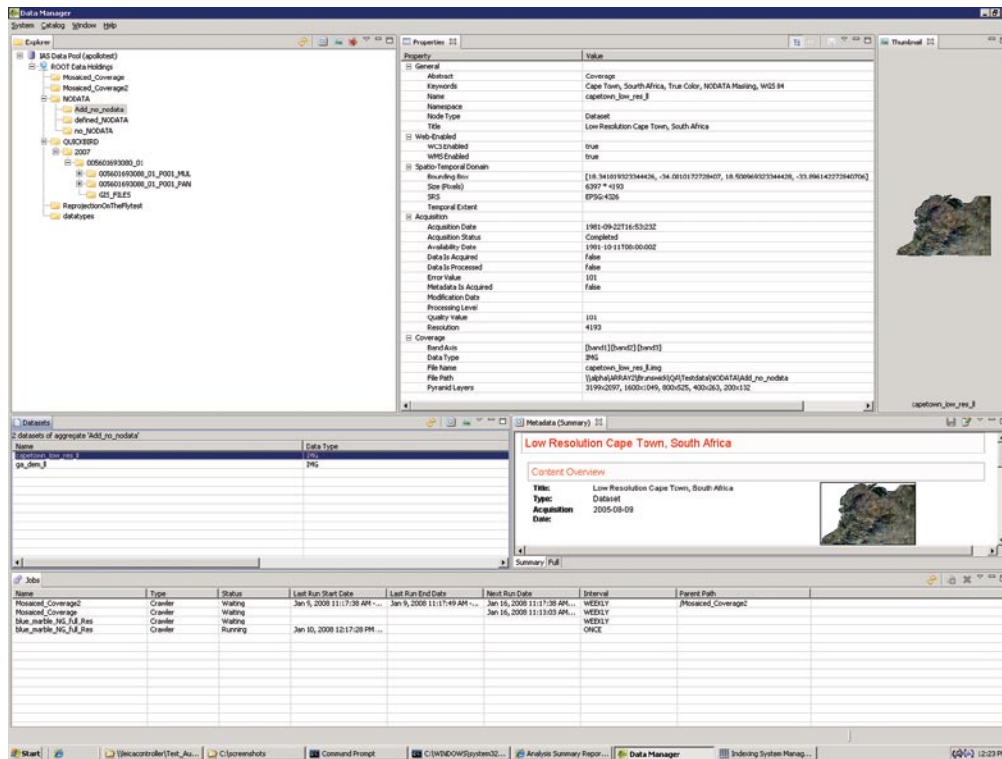
Highlighted Features

ERDAS Image Manager provides a variety of tools, equipping users to:

- **Discover** geospatial imagery and terrain existing throughout an organization. Using intelligent data crawlers, imagery and terrain distributed across departments can be securely found and managed.
- **Describe** (harvest) the sensor and image specific metadata associated with imagery, terrain and web services. Native harvesters automate the processes associated with extracting business critical intelligence from data. This process saves time and ensures high fidelity content in your geospatial business system.
- **Catalog** geospatial imagery, terrain and WFS layers for immediate exploitation. Securely indexing the imagery and terrain located across an organization saves time in finding the data you need, when you need it.
- **Serve** seamless color balanced orthorectified image mosaics and GIS ready image products to desktop and web client applications. Combined with ERDAS TITAN, imagery can be directly served to OGC compliant web clients, Google Earth and Microsoft Virtual Earth. Using the ECW-P protocol, thousands of high-volume images can be rapidly delivered to customers.

Additionally, ERDAS Image Manager is:

- **Fast** Rapidly deliver high volumes of image content to users inside and outside the organization while maximizing your hardware and IT investment. Using the ECW-P image delivery protocol, thousands of large images can be rapidly delivered to large numbers of customers.
- **Secure** Securing your data holdings preserves the investment made by an organization to provide the right data, on time and to the right individuals. Using ERDAS Image Manager, administrators define fine-grained security privileges associated with data and web service access to users internal and external the organization.
- **Scaleable** As the number of users in your organization grows, so does the performance quality of ERDAS Image Manager. Built to maximize J2EE business processes and server hardware, ERDAS Image Manager is capable of solving the scalability bottlenecks commonly experienced by organizations working with high volumes of image content.
- **Flexible** Users may develop vertical market applications using an extensible web and rich client application framework. Given its open and standards compliant SOA architecture, ERDAS Image Manager can be extended to meet specific vertical market requirements.
- **Interoperable** Any OGC WMS, WCS or CS-W compliant web service client is supported, including ESRI ArcMap, Intergraph GeoMedia and Google Earth.



Remote Data Manager Application securely configure and monitor Geographic Information Crawlers, browse the catalog, view, edit and manage metadata.

- **Intelligent** ERDAS Image Manager automatically extracts the right business critical information from datasets and web services needed to support intelligent geospatial applications and business systems. Without open and interoperable ISO metadata, the ability to perform accurate and reliable data collection, spatial modeling and analysis is not possible.
- **Accurate** ERDAS Image Manager preserves and utilizes the high fidelity information associated with imagery datasets and serves accurate ortho-ready imagery directly to geospatial desktop and web applications.

Contact Us

If you are interested in architecting and deploying ERDAS Image Manager, please contact ERDAS, Inc: +1 770 776 3400, toll free +1 866 534 2286 or visit www.erdas.com.